

SBX Luminaire Kit

One Light Source, Endless Solutions



The Universal HID Retrofit System

This system is the most cost effective way to enjoy the benefits of LED lighting, in ANY HID light fixture. This luminaire system operates in any existing light fixture, such as parking lot lighting, streetlights, walkway, decorative or wall pack light fixtures, with the installation in 15 minutes or less. See www.PLGLED.com for instruction manual and video tutorials.

Optics

- Can replace traditional HID fixtures up to 1500 Watts
- White light color available from 2.7K to 5K. 70 and 80 CRI packages available
- Standard IESNA Distributions available, as well as custom modified distributions.
- IP66 Rated lenses, made from UV resistant and ultra clear PMMA
- BUG Rating of 1-0-1 (Type II)
- Full Cutoff
- All come standard with 0-10V dimming capabilities.

Performance

- 100,000+ Hour lamp life per the Energy Star TM-21 Calculator.
- -30° C to +50° C Ambient Temperature Rating
- 5 Year Standard Warranty. Extended warranty options available.

Electrical

- Accepts range of line voltages between 120V to 277V AC
- Option for High Voltage Input
- THD < 20%
- PF > .9

Mechanical

- Made from rolled Aluminum 5052 Alloy for superior corrosion resistance and heat sinking compared to cast aluminum.
- Replaceable and serviceable module construction.
- Quick connect terminals for line side connections.
- Precision machining for exact fit in existing fixture.

Patent Pending



19442 East Warner Road
Mesa, AZ 85212

Phone: 480.218.6104
Fax: 480.654.8374

Email: info@PLGLED.com
Web: PLGLED.com

Ordering Information:

Example: PLG-SBX-02-II-50-60

<u>PLG</u>	<u>SBX</u>					
Brand	Series	Number of Modules	Lens Distribution	CCT	Nominal Wattage	Options
PLG	SBX	01	II (Type II)	50 (5000K)	30	M30 (Modified optics)
		02	III (Type III)	40 (4000K)	60	HV (High Voltage - 480V)
		03	IV (Type IV)	30 (3000K)	90	SP (Surge Protector)
		04	V (Type V Spot)	27 (2700K)	110	SH (Backlight Shield)
		05	Vn (Type V Area)	<i>*Only 27 & 30 are IDA Approved*</i>	130	CR80 (High CRI)
		06			150	
		07			200	
		08			225	
		09			240	
		10			260	
		11			280	
		12			300	

Installation Overview:

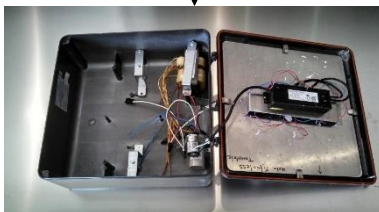
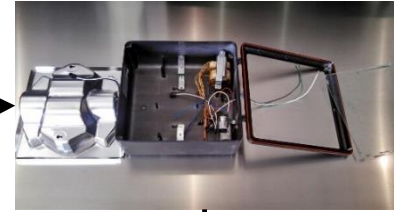
Step 1 – Disconnect Power



Step 2 – Remove Glass



Step 3 – Remove Reflector



Step 4 – Install Retrofit



Step 5 – Connect Power

Go to www.PLGLED.com for video of a complete installation in under 5 minutes



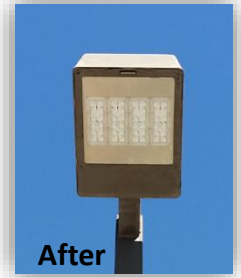
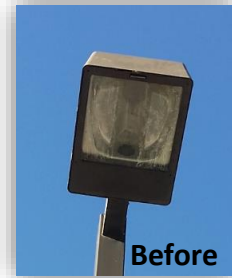
Specifications:

Brand	Series	Number of Modules	Lumens	Efficacy	Color Temp	Nominal Wattage	Actual Wattage	Minimum CRI	Input Volts	Input Amps	Dimming
PLG	SBX	01	3172	117	50	30	27	70	120	0.30	0-10 V, > 5%
			3154	117	40				240	0.20	
			3124	116	30				277	0.15	
			2664	99	27				80	480	
		02	7001	125	50	60	56	70	120	0.50	0-10 V, > 5%
			6958	124	40				240	0.24	
			6503	114	30				277	0.225	
			5589	100	27				80	480	
		03	10503	131	50	90	80	70	120	0.75	0-10 V, > 5%
			10437	130	40				240	0.36	
			9756	122	30				277	0.34	
			8384	106	27				80	480	
		04	14004	132	50	110	106	70	120	1.00	0-10 V, > 5%
			13916	131	40				240	0.48	
			13008	123	30				277	0.45	
			11178	105	27				80	480	
		05	17505	129	50	130	136	70	120	1.25	0-10 V, > 5%
			17395	128	40				240	0.60	
			16260	120	30				277	0.56	
			13973	103	27				80	480	
		06	21006	126	50	150	167	70	120	1.50	0-10 V, > 5%
			20874	125	40				240	0.72	
			19512	117	30				277	0.68	
			16767	100	27				80	480	
		07	24507	132	50	200	186	70	120	1.75	0-10 V, > 5%
			24353	131	40				240	0.86	
			22764	122	30				277	0.75	
			19562	105	27				80	480	
		08	28008	131	50	225	214	70	120	2.00	0-10 V, > 5%
			28732	130	40				240	0.96	
			26016	122	30				277	0.90	
			22356	104	27				80	480	
		09	31509	130	50	240	242	70	120	2.05	0-10 V, > 5%
			31311	129	40				240	1.20	
			29268	121	30				277	1.00	
			25151	104	27				80	480	
		10	35010	132	50	260	265	70	120	2.10	0-10 V, > 5%
			34790	130	40				240	2.00	
			32520	123	30				277	1.40	
			27946	105	27				80	480	
		11	36511	127	50	280	288	70	120	2.40	0-10 V, > 5%
			36269	126	40				240	2.10	
			33772	117	30				277	1.60	
			28740	102	27				80	480	
		12	39708	127	50	300	313	70	120	2.64	0-10 V, > 5%
			37790	121	40				240	2.20	
			36024	115	30				277	2.00	
			30534	107	27				80	480	

How to Order:

The SBX Luminaire kit is custom cut to fit precisely in your existing light fixtures. This precise fabrication leads to easy installation in the field, but it is crucial that existing fixture measurements are accurate. There are 3 options for ordering size:

1. You provide the measurements to us
2. Send us a piece of glass from your fixture
3. We get the measurements from you



Who We Are:



LED Lighting Manufacturer

- Located In Mesa, AZ, all fixtures are assembled in house by our team of lighting technicians.

Electrical Contractor

- With a strong reputation for quality work in both new construction and maintenance, PLG is a Licensed, Bonded, and Insured electrical contractor whose been serving the American Southwest lighting market for over 24 years.



Performance Based Contractor

- PLG guarantees results for energy and maintenance savings by performing in house energy audits, utility rebate processing, and photometric designs.



19442 East Warner Road
Mesa, AZ 85212

Phone: 480.218.6104
Fax: 480.654.8374

Email: info@PLGLED.com
Web: PLGLED.com